

Lecture - 2015 Course Introduction

From Embryology

Course Introduction

This first lecture will be a general introduction to the course **Want to start our learning interaction?** and the subject of Embryology.



Firstly, an introduction to the course, its content, method of presentation, assessment and an opportunity to ask questions.

Secondly, some historic background to the subject and related current Australian trends. I do not expect you to remember specific historic dates or statistical data, this is provided as an introduction to the topic.

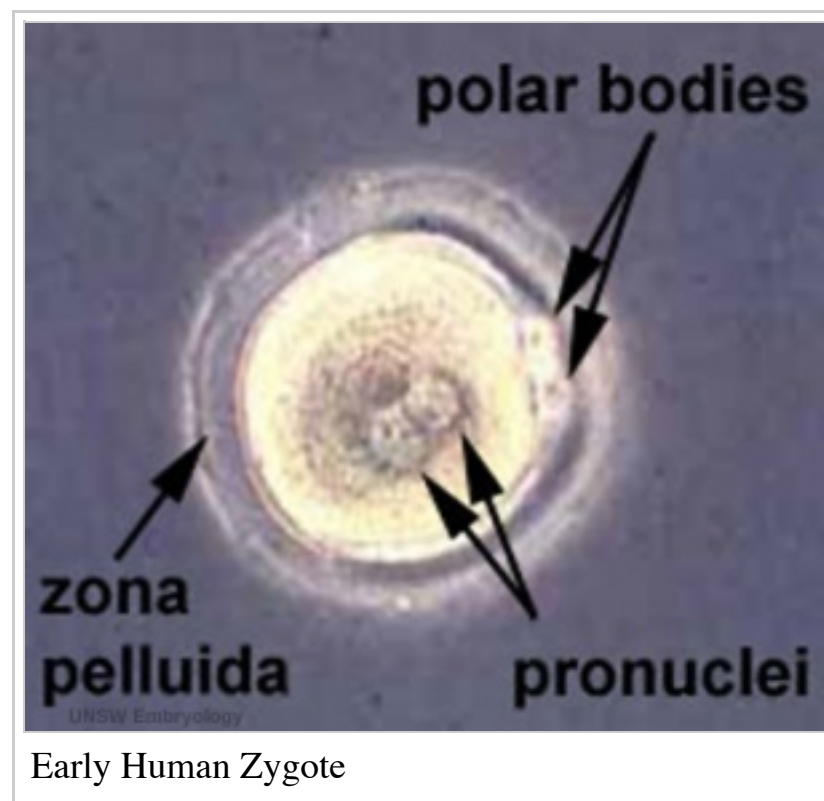
Course coordinator

I like my lectures to be interactive, so ask me questions and I will also be asking you questions!

1. Log-In
2. Create your own student page.
(Note - Use only your student ID on this and all site pages). List of current students - ANAT2341 2015 Students
3. Click "save page". You now have your own course page to submit individual assessment items. Any problems, look at the Help page.

Lecture Objectives

[Introduction Movies\[Expand\]](#)



1. Understand the course objectives and assessment.
2. Brief understanding of the historic background of embryology.
3. Brief understanding of Australian data.
4. Broad overview of human development.

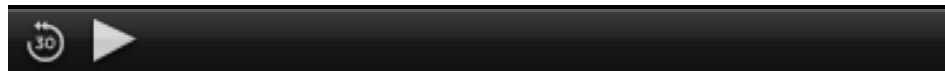


UNSW Embryology

Human Development

Page | Play

echo³⁶⁰



[Click Here](#) to play on mobile device

ANAT2341 Course Outline

I will spend the first half going through the current course design, online support and assessment criteria. This is an opportunity to ask the coordinator questions about the course.

2015 Course Outline PDF

Audio from this lecture is available from ECHO360 (https://lectures.unsw.edu.au/ess/portal/section/5157_00900) or by the link within Moodle (<http://moodle.telt.unsw.edu.au/course/view.php?id=15814>).

Course Links: [Homepage](#) | [Overview](#) | [Timetable](#) | [Moodle](#) (<http://moodle.telt.unsw.edu.au/course/view.php?id=15814>) | [Lecture 1 PDF](#)

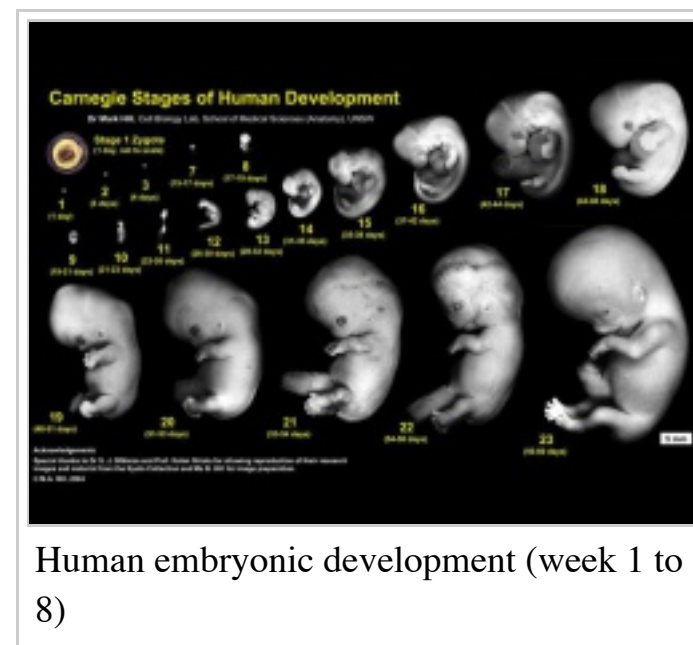
Lecture Archive: [2014](#) | [2013](#) | [2012](#) | [2011](#)

Email me ([Mailto:m.hill@unsw.edu.au](mailto:m.hill@unsw.edu.au)) for any additional information or to make an appointment.

Textbooks

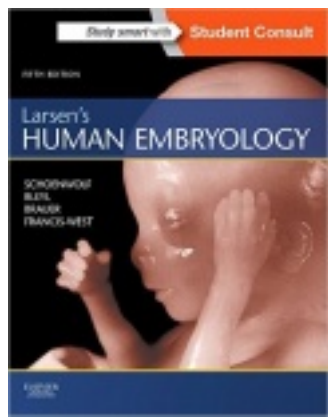
- The textbooks listed below is recommended for this course and page references are given in each lecture.
- The UNSW Library is currently updating subscription to the new textbook 10th edition for 2015. When available I will update the links shown here.
- Textbook available at campus bookshop and online to UNSW students.
- There are additional embryology textbooks that can also be used, consult course organizer.

The Developing Human: Clinically Oriented Embryology [Expand]



Human embryonic development (week 1 to 8)

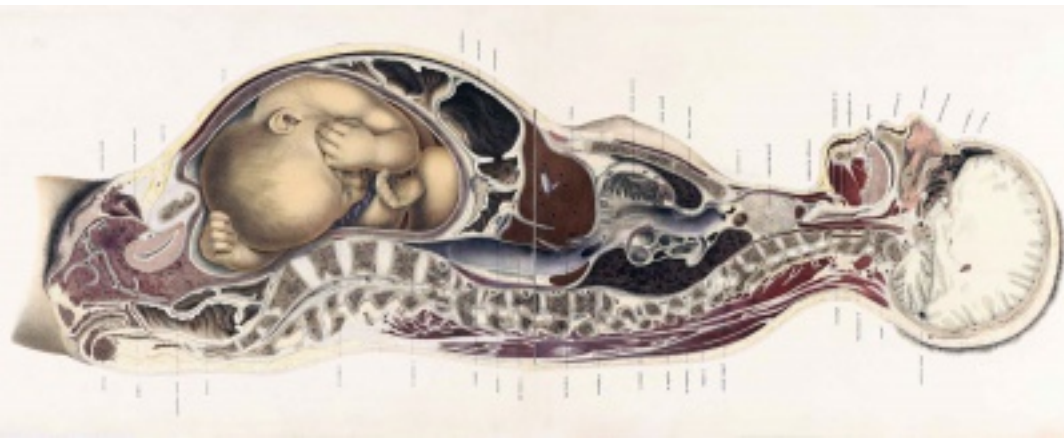
embryology (5th ed.). New York; Edinburgh: Churchill Livingstone.



UNSW students have full access to this textbook edition through UNSW Library subscription (<http://er.library.unsw.edu.au/er/cgi-bin/eraccess.cgi?url=http://www.unsw.ebib.com.wwwproxy0.library.unsw.edu.au/patron/FullRecord.aspx?p=2074524>) (with student Zpass log-in).

History

History - Embryologists | Embryology History | Human Embryo Collections

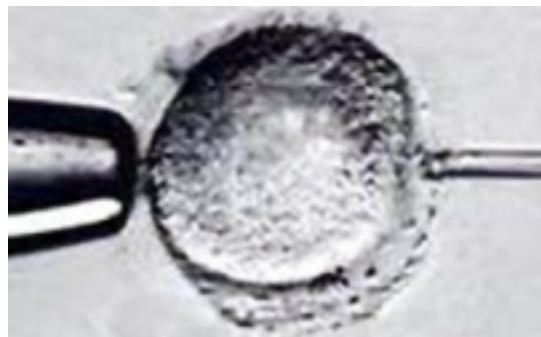


17-18C Braune - The Position of the Uterus and Fetus at Term (1872)

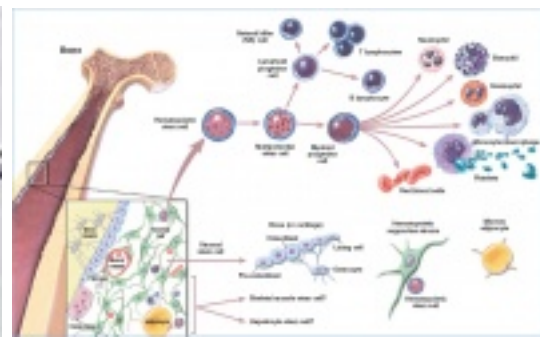
Human Embryo Collections [Expand]

Animal Models [Expand]

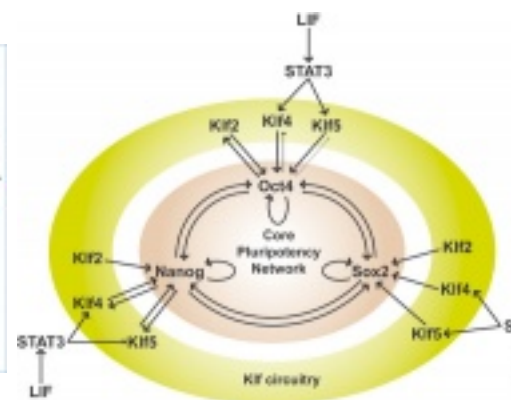
In Vitro Fertilization (1978)



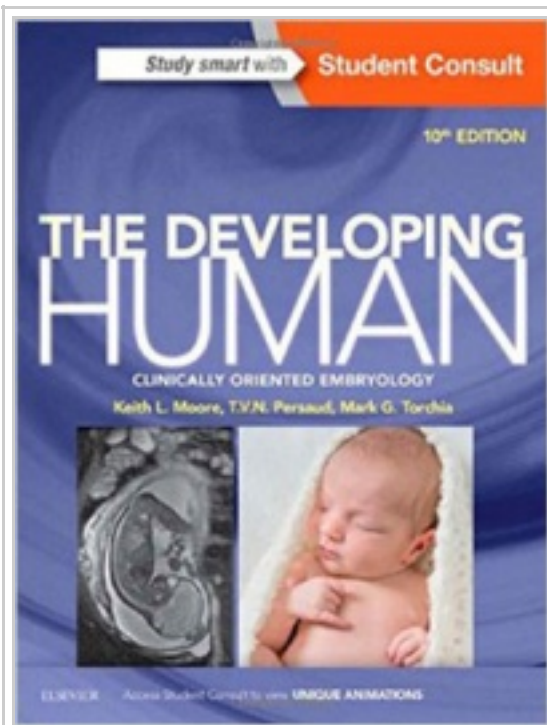
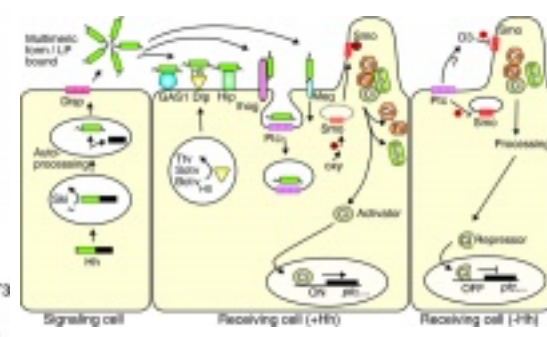
Stem Cells (1981)



Induced Stem Cells (2006)



Molecular Development

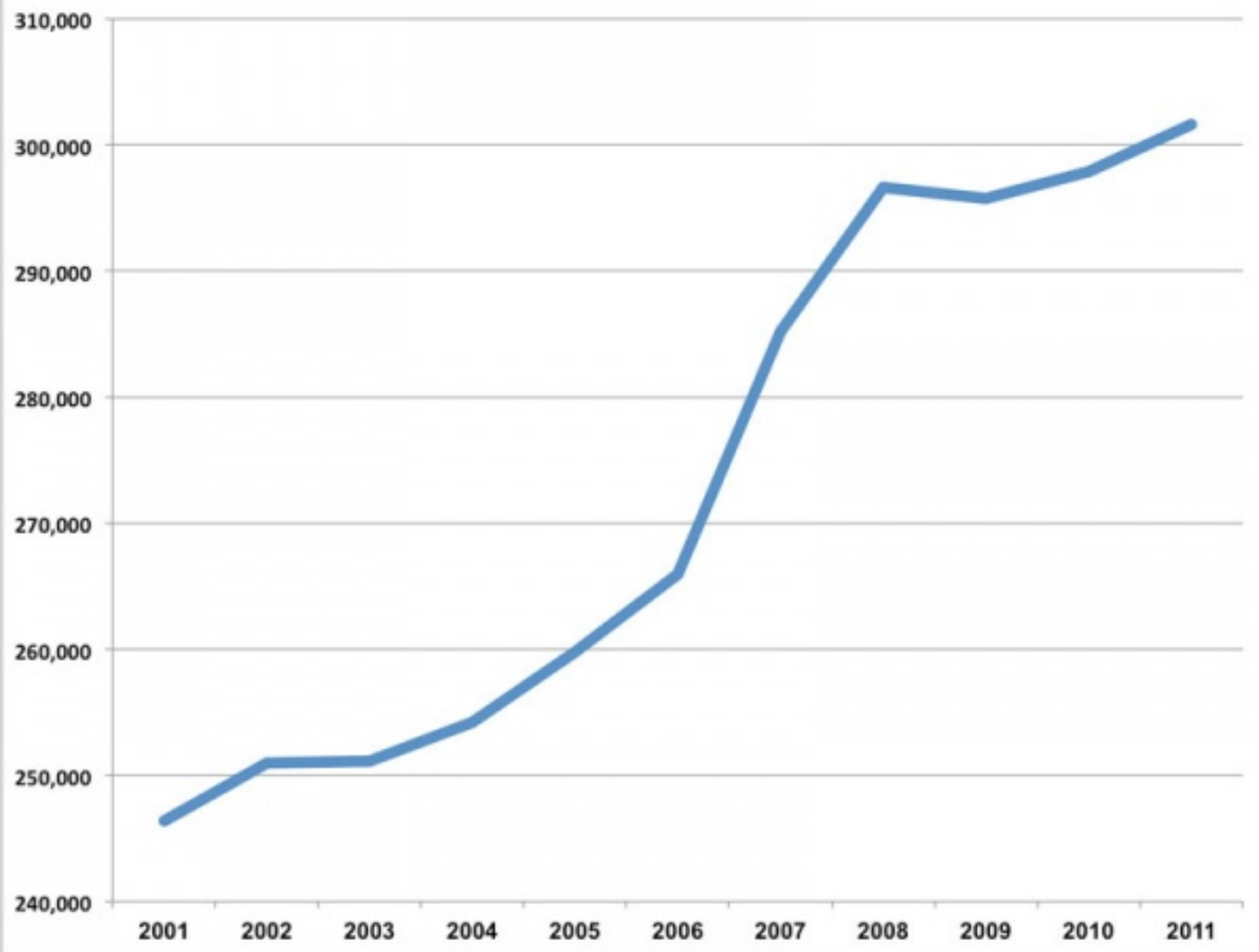


The Developing Human, 10th edn

Australian Data

1 August 2014 at 03:53:30 PM (Canberra time), the resident population of Australia is projected to be: 23,550,233.

Australian Births



Australian Statistics



Australia's mothers and babies (2011)

Average maternal age in 2011 was **30.0** years, the same as 2009 but still more than the earlier years (2000, 29.0 years; 2002, 29.4 years).



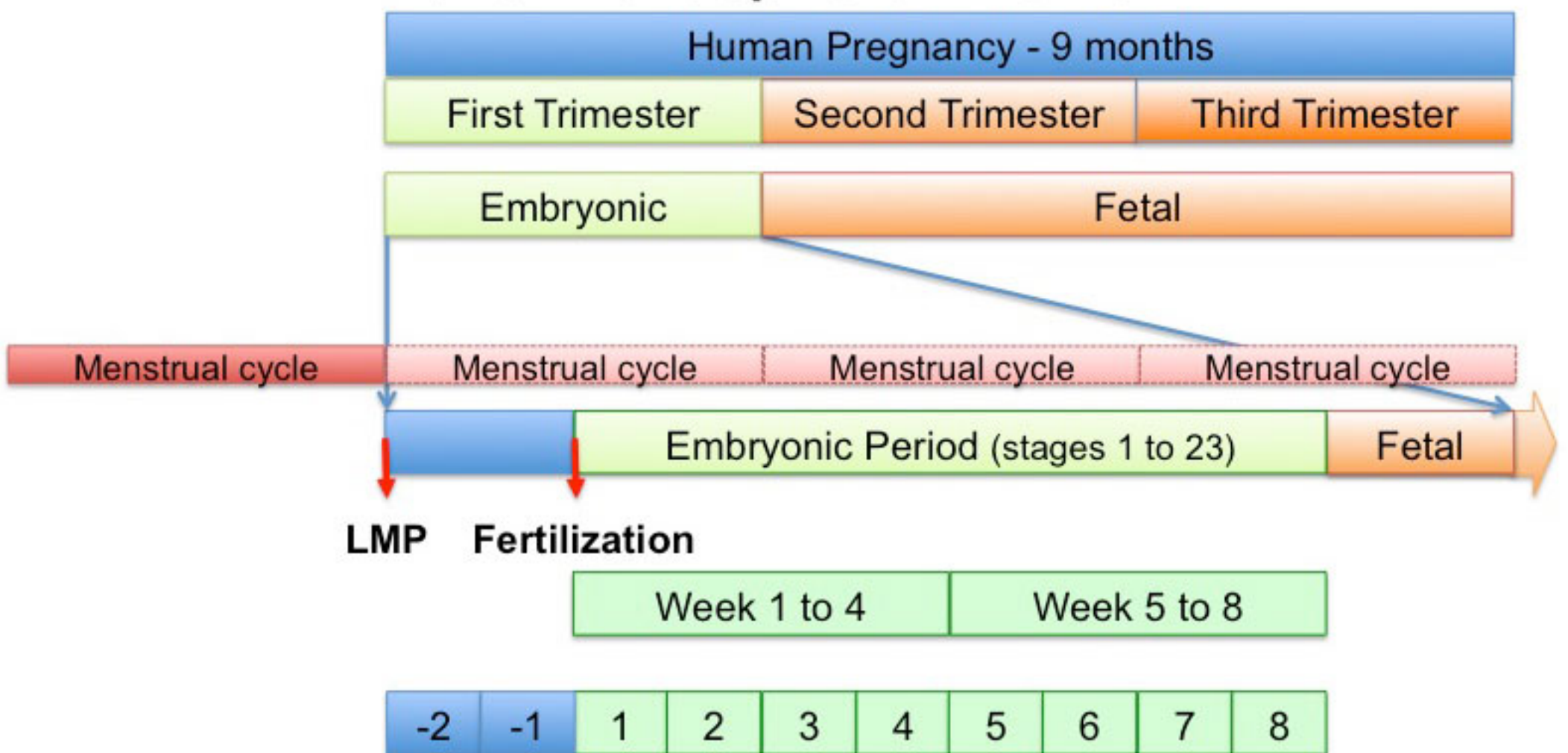
Assisted reproductive technology in Australia and New Zealand (2010)

Assisted Reproductive Technology (ART) was used by **3.8%** (2009, 3.6%) of women who gave birth.

Victoria - 10 most reported birth anomalies [Expand]

Human Development

Human Development Timeline



2015 Course: **Week 2** Lecture 1 Lecture 2 Lab 1 | **Week 3** Lecture 3 Lecture 4 Lab 2 | **Week 4** Lecture 5 Lecture 6 Lab 3 | **Week 5** Lecture 7 Lecture 8 Lab 4 | **Week 6** Lecture 9 Lecture 10 Lab 5 | **Week 7** Lecture 11 Lecture 12 Lab 6 | **Week 8** Lecture 13 Lecture 14 Lab 7 | **Week 9** Lecture 15 Lecture 16 Lab 8 | **Week 10** Lecture 17 Lecture 18 Lab 9 | **Week 11** Lecture 19 Lecture 20 Lab 10 | **Week 12** Lecture 21 Lecture 22 Lab 11 | **Week 13** Lecture 23 Lecture 24 Lab 12 | **Projects:** Group 1 | Group 2 | Group 3 | Group 4 | Group 5 | Group 6 | Students | Student Sharing | Moodle page (<http://moodle.telt.unsw.edu.au/course/view.php?id=15814>)

Glossary Links

A | B | C | D | E | F | G | H | I | J | K | L | M | N | O | P | Q | R | S | T | U | V | W | X | Y | Z | Numbers | Symbols

Cite this page: Hill, M.A. (2015) **Embryology Lecture - 2015 Course Introduction**. Retrieved August 18, 2015, from https://embryology.med.unsw.edu.au/embryology/index.php/Lecture_-_2015_Course_Introduction

What Links Here? (http://php.med.unsw.edu.au/embryology/index.php?title=Special:WhatLinksHere/Lecture_-_2015_Course_Introduction)

© Dr Mark Hill 2015, *UNSW Embryology* ISBN: 978 0 7334 2609 4 - UNSW CRICOS Provider Code No. 00098G

Retrieved from 'https://embryology.med.unsw.edu.au/embryology/index.php?title=Lecture_-_2015_Course_Introduction&oldid=189878'

Categories: Frog | Mouse | 2015 | Science-Undergraduate

- This page was last modified on 5 August 2015, at 14:38.
- This page has been accessed 208 times.