

Lecture - 2017 Course Introduction

Embryology (/embryology/index.php/Main_Page) - 28 Jul 2017



(/embryology/index.php/File:Facebook_16x16.png)



(/embryology/index.php/File:Pinterest_16x16.png)



(/embryology/index.php/File:Twitter_16x16.png)

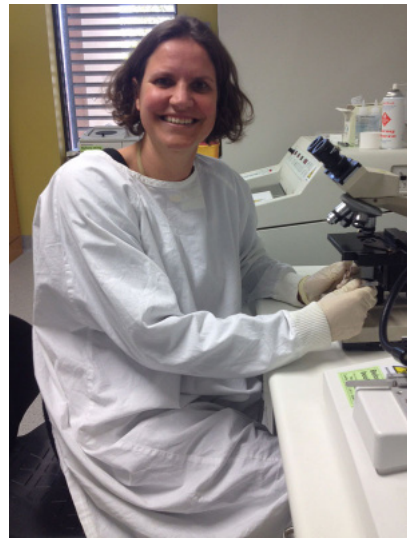
Expand to Translate

[Expand]

Course Introduction



Dr Mark Hill



(/embryology/index.php/File:Annemiek_Beverdam_profile_photo.jpeg)

Dr Mark Hill

Dr Annemiek Beverdam

This first lecture will be a general introduction to the course and the subject of Embryology (the lecture content is not assessable).

Firstly, an introduction to the course, its content, method of presentation, assessment and an opportunity to ask questions.

Secondly, some historic background to the subject and related current Australian trends. I do not expect you to remember specific historic dates or statistical data, this is provided as background to the topic.

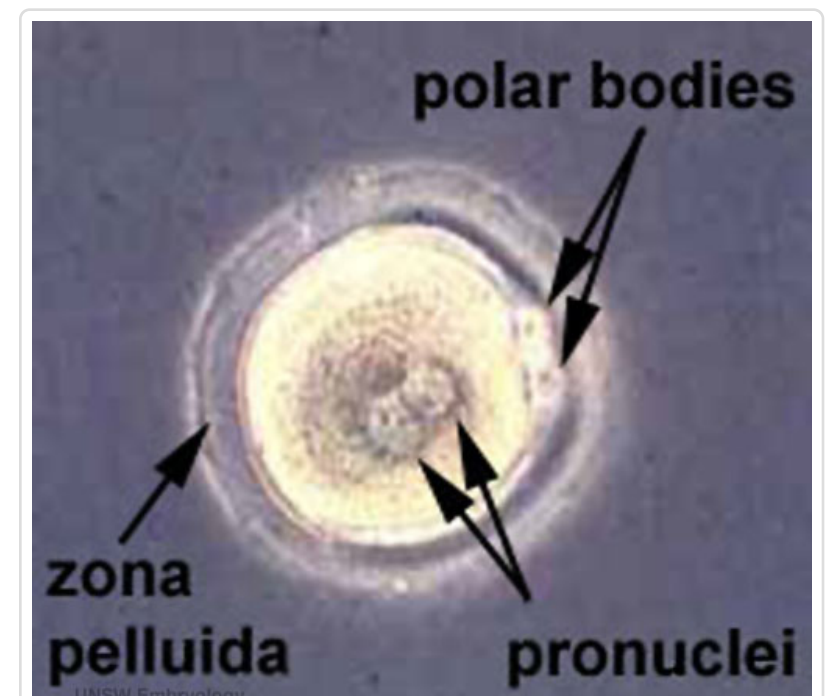
We like our lectures to be interactive, so please ask questions and we will also be asking you questions!

Lecture - Print PDF (/embryology/index.php?title=Special:Upload&wpDestFile=Lecture_-_2017_Course_Introduction_-_Embryology.pdf)

2017 Students (/embryology/index.php/ANAT2341_Embryology_2017) - Please note this draft online lecture content is currently being updated for the current course (/embryology/index.php/ANAT2341_Course_Timetable_2017). This notice removed when update completed.

Lecture Objectives

1. Understand the course objectives and assessment.
2. Introduce the course contributors.
3. Brief understanding of the historic background of embryology.
4. Broad overview of human development.



(/embryology/index.php/File:Early_zygote_label)
Zygote (/embryology/index.php/Zygote) - the first cell formed after fertilisation. This early zygote still has the male and female pronuclei.



(/embryology/index.php/One_Minute_Embryology)

1 Minute Embryology

(/embryology/index.php/One_Minute_Embryology#Human_Development)



Here is the whole course in One Minute.

[Introduction Movies \[Expand\]](#)

Understand the Course

- [2017 Course Outline \(/embryology/images/1/10/2017-ANAT2341-course-outline.pdf\)](#)
- [ANAT2341 Course Timetable 2017 \(/embryology/index.php/ANAT2341_Course_Timetable_2017\)](#)
- [Embryology Textbooks - UNSW \(/embryology/index.php/Embryology_Textbooks_-_UNSW\)](#)

[The Developing Human: Clinically Oriented Embryology \(10th edn\) \[Expand\]](#)

[Larsen's Human Embryology \(5th edn\) \[Expand\]](#)

- [Science Student Projects \(/embryology/index.php/Science_Student_Projects\)](#)

Course Research Experts

Guest Research Experts



[\(/embryology/index.php/ANAT2341_Lab_1\)](#)
 Dr Steven Fleming
 (/embryology/index.php/ANAT2341_Lab_1)
 Fertility and IVF Specialist



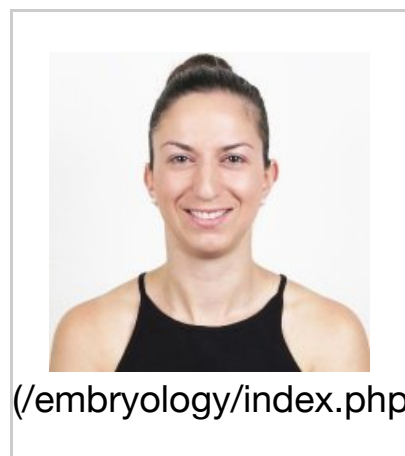
[\(/embryology/index.php/ANAT2341_Lab_2\)](#)
 Dr Fabien deRue
 (/embryology/index.php/ANAT2341_Lab_2)
 Transgenic Mouse Models



[\(/embryology/index.php/ANAT2341_Lab_4\)](#)
 Dr Rob Gilchrist
 (/embryology/index.php/ANAT2341_Lab_4)
 Oocyte Biology Research Unit



[\(/embryology/index.php/ANAT2341_Lab_5\)](#)
 Dr Vashe Chandrakanthan
 (/embryology/index.php/ANAT2341_Lab_5)
 Cardiac and Vascular Development



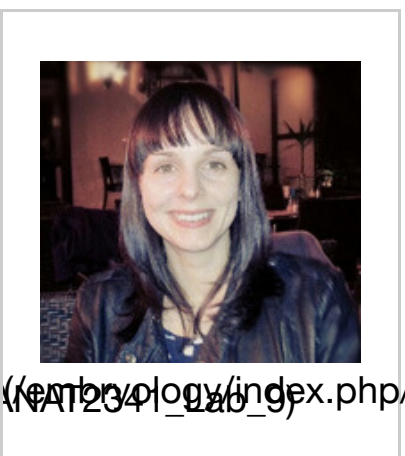
[\(/embryology/index.php/ANAT2341_Lab_6\)](#)
 Dr Tennille Sibbritt
 (/embryology/index.php/ANAT2341_Lab_6) Head development



[\(/embryology/index.php/ANAT2341_Lab_7\)](#)
 Dr Hongjun Shi
 (/embryology/index.php/ANAT2341_Lab_7)
 Somitogenesis/Vertebral Malformation



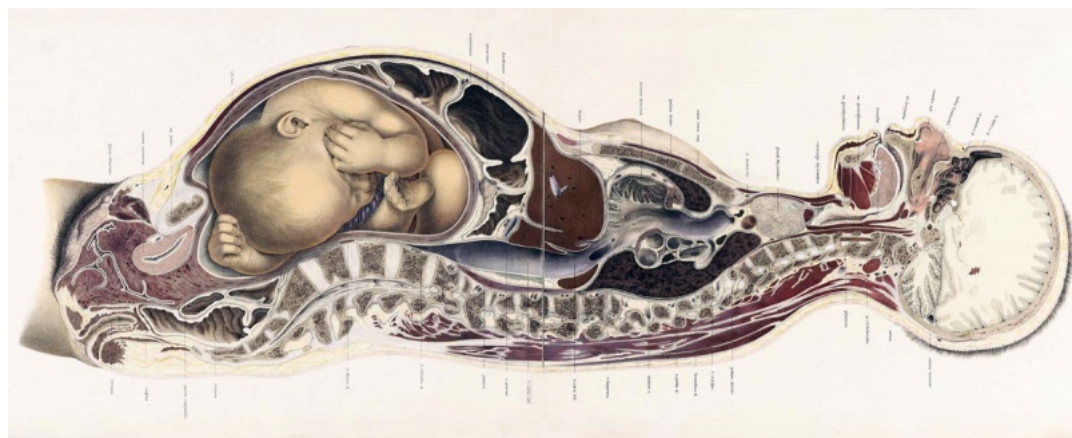
[\(/embryology/index.php/ANAT2341_Lab_9\)](#)
 Dr Stephen Palmer
 (/embryology/index.php/ANAT2341_Lab_9)
 Abnormalities of Muscle and Brain



[\(/embryology/index.php/ANAT2341_Lab_10\)](#)
 Dr Kim Beaumont
 (/embryology/index.php/ANAT2341_Lab_10)
 Melanocyte Development and Abnormalities

History

[History - Embryologists \(/embryology/index.php/History_-_Embryologists\)](#) | [Embryology History \(/embryology/index.php/Embryology_History\)](#) | [Human Embryo Collections \(/embryology/index.php/Human_Embryo_Collections\)](#)



[\(/embryology/index.php/File:BrauneB1.jpg\)](#)

17-18C [\(/embryology/index.php/Embryology_History_-_17th_and_18th_Century_Anatomies\)](#) Braune - The Position of the Uterus and Fetus at Term (1872)

[Human Embryo Collections \(/embryology/index.php/Human_Embryo_Collections\) \[Expand\]](#)

[Animal Models \(/embryology/index.php/Animal_Development\) \[Expand\]](#)

1978

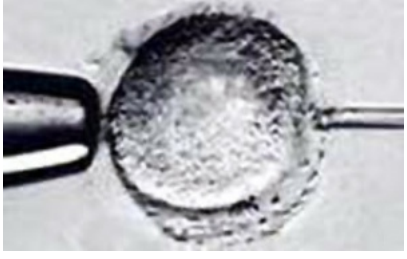
In Vitro Fertilization
[\(/embryology/index.php/Assisted_Reproductive_Technology\)](#)

1981

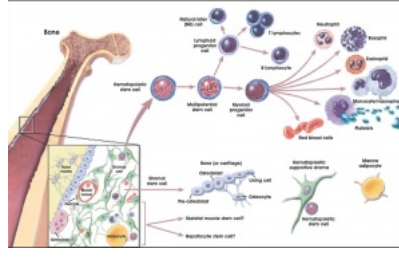
Stem Cells [\(/embryology/index.php/Stem_Cells\)](#)

1996

Somatic Cell Nuclear
[\(/embryology/index.p](#)



(/embryology/index.php/File:Intracytoplasmic_sperm_insemination.jpg)



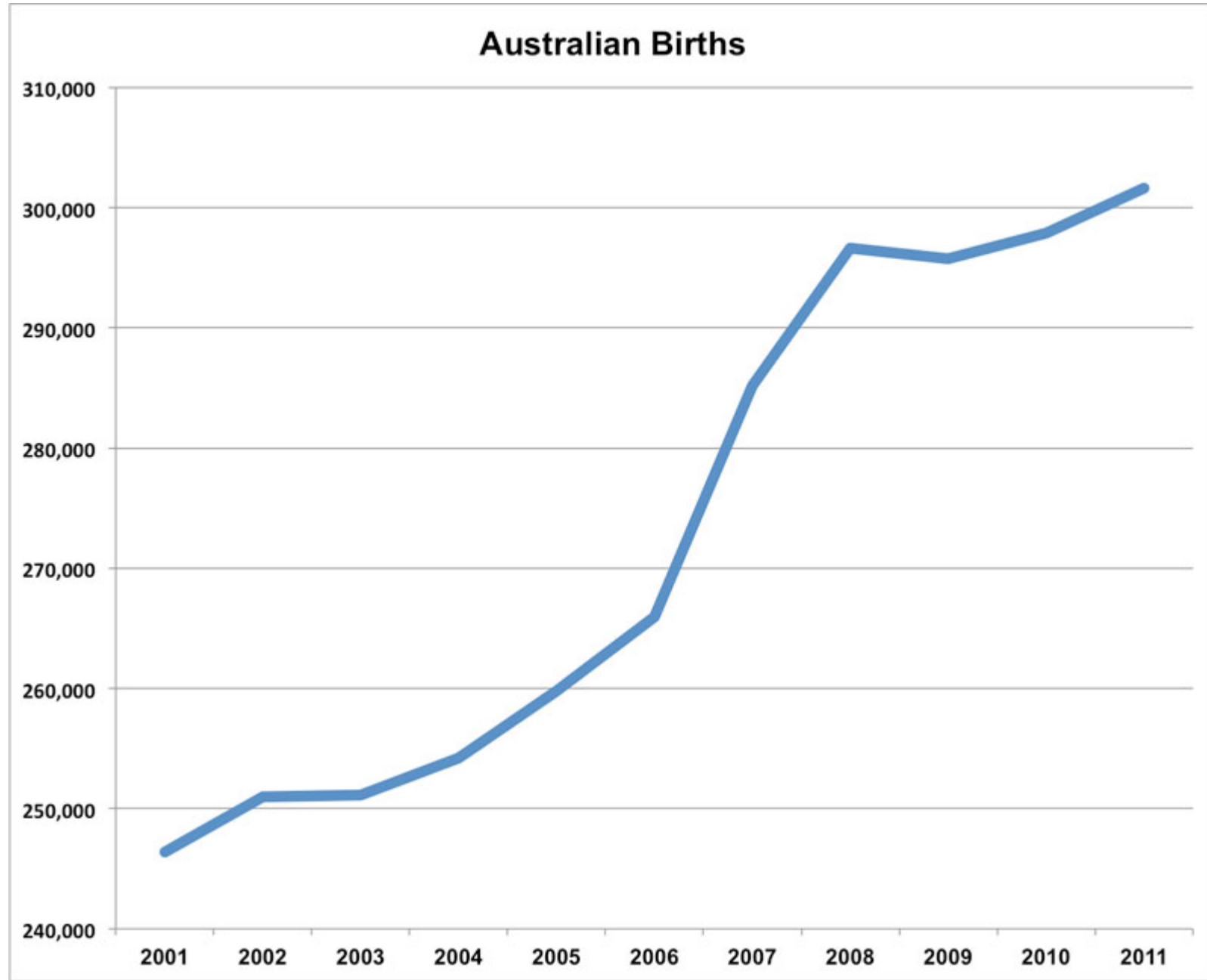
(/embryology/index.php/File:Hematopoietic_and_stromal_cell_differentiation.jpg)



(/embryology/index.p

Australian Data

21 July 2016 the resident population of Australia was projected to be: 24,135,202.



(/embryology/index.php/File:Australian-births_2011.jpg)

Australian Statistics (/embryology/index.php/Australian_Statistics)



Australia's mothers and babies 2013

in brief

(/embryology/index.php/Australia%E2%80%99s_mothers_and_babies_2013)

Australia's mothers and babies (2013)

Average maternal age in 2013 was **30.1**

(/embryology/index.php/Genetic_risk_maternal_age) years, the same as 2009 but still more than the earlier years (2000, 29.0 years; 2002, 29.4 years). Birth number was 309,489 babies in 2013, an increase of 20% from 256,925 in 2003.



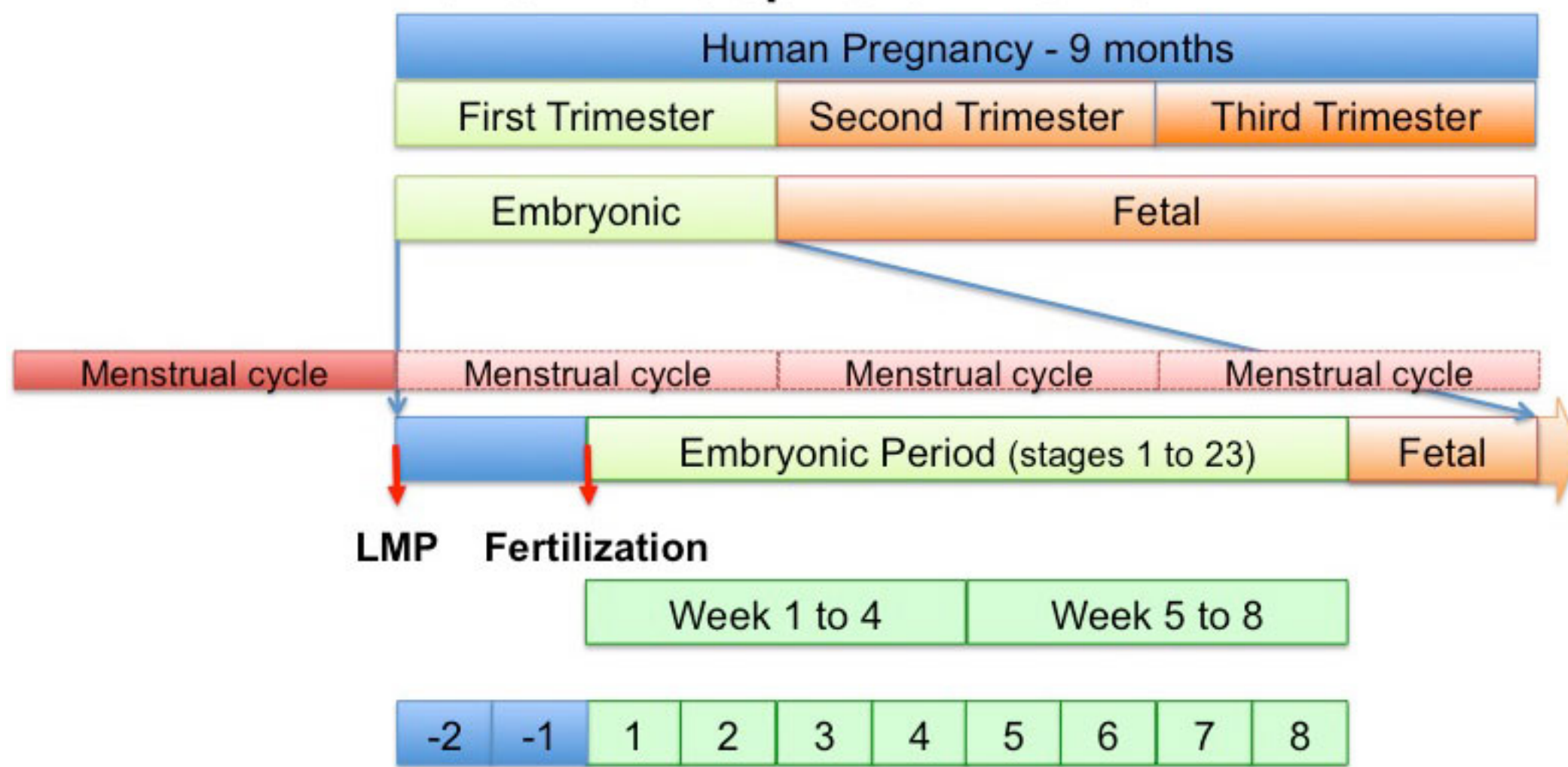
Assisted reproductive technology in Australia and New Zealand (2010)

Assisted Reproductive Technology (/embryology/index.php/Assisted_Reproductive_Technology) was used by **3.8%** (2009, 3.6%) of women who gave birth.

Victoria - 10 most reported birth anomalies [Expand]

Human Development

Human Development Timeline



(/embryology/index.php/File:Human_development_timeline_graph_02.jpg)

2017 ANAT2341 (/embryology/index.php/ANAT2341_Embryology_2017) - Timetable (/embryology/index.php/ANAT2341_Course_Timetable_2017) | Course Outline (/embryology/images/1/10/2017-ANAT2341-course-outline.pdf) | Moodle (<https://moodle.telt.unsw.edu.au/course/view.php?id=28181>)
 Labs: 1 (/embryology/index.php/ANAT2341_Lab_1) | 2 (/embryology/index.php/ANAT2341_Lab_2) | 3 (/embryology/index.php/ANAT2341_Lab_3) | 4 (/embryology/index.php/ANAT2341_Lab_4) | 5 (/embryology/index.php/ANAT2341_Lab_5) | 6 (/embryology/index.php/ANAT2341_Lab_6) | 7 (/embryology/index.php/ANAT2341_Lab_7) | 8 (/embryology/index.php/ANAT2341_Lab_8) | 9 (/embryology/index.php/ANAT2341_Lab_9) | 10 (/embryology/index.php/ANAT2341_Lab_10) | 11 (/embryology/index.php/ANAT2341_Lab_11)
 Lectures: **1 Introduction** | 2 Fertilization (/embryology/index.php/Lecture_-_Fertilization) | 3 Week1/2 (/embryology/index.php/Lecture_-_Week_1_and_2_Development) |

Categories (/embryology/index.php/Special:Categories): Frog (/embryology/index.php/Category:Frog) | Mouse (/embryology/index.php/Category:Mouse)

This page was last modified on 19 July 2017, at 15:36.